

# Avalon Preservation Trust

Incorporated as Avalon Preservation Association

Bulletin 118 April 2024

## What's Happening in Avalon?

### NBC Survey - Avalon Shared Space Trial

Submissions are being read, deidentified, triaged (removing irrelevant commentary about other matters) and a report will be submitted to council. We are keeping an eye out on when it will be discussed at council. If the shared space trial is considered successful it will be approved and a secondary process begin to introduce permanent fixtures, to replace the current temporary fixtures. APA maintains there should be more traffic calming in the shared space zone. We noted the improved visibility of 10K/h signs.



**Avalon Public School traffic management.** The YourSay community consultation on closed on 14 April. APA made a submission commenting that any change should focus on pedestrian safety and less on parking regulation. We would like to see pedestrian crossings at Sanders Lane and at The Crescent.



*In APA, we care for Avalon because we live here*

**Paradise Beach wharf and tidal pool surround.** This was originally built in 1940s and with high tides the boardwalk is covered. Work is planned for winter, June to October, to avoid seahorse breeding.

Below: the original groyne on the left hand side of the pool is a heritage item and will be preserved.



**Wharf at Taylors Point, right.** This is an urgent make-safe project to replace timber piles. This project is planned to be conducted in winter from June to September and the wharf will be closed for the duration



**Avalon Surf Club hospitality spaces lease.** Council is liaising with a preferred applicant for both spaces. They will rent through Upstate Real Estate if approved.

**Tree outside Alma Restaurant.** There are two trees of interest to council, at 45 and 47 Old Barrenjoey rd. The Swamp Mahogany outside 45 is in poor condition and will be replaced with a Watergum to match the other trees in the street. The one outside 47, left, shows signs of stress but is being watched. It has had to deal with water main bursts and building projects in recent years.

**Trees in unnamed park next to Currawong Avenue.** Three casuarinas have been vandalised and will be replaced with fast growing Angophoras.

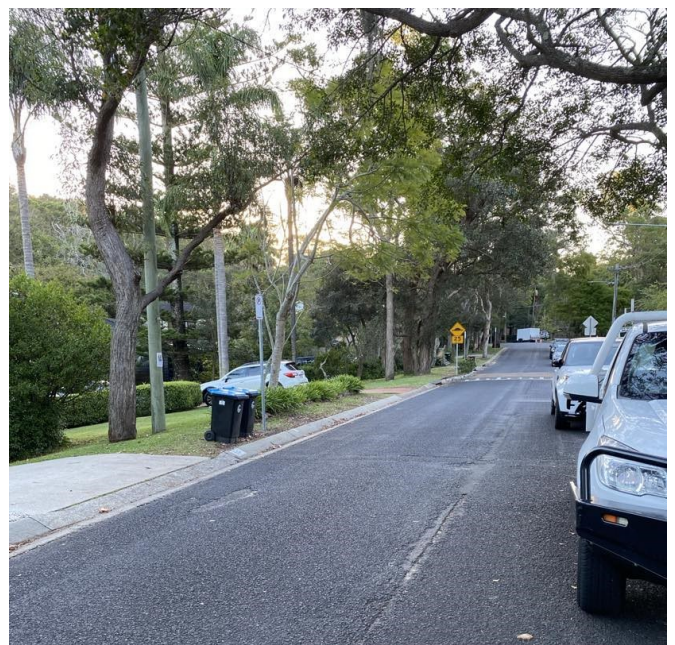


**Retaining wall at Wanawong Rd and Patrick Rd.** There is an interesting geological rock feature (striated warp) which was topped with shotcrete because the top layer (regolith) was at risk of sliding. Sydney University geological experts studied it and recommended council an approach to Council, to leave the bottom two layers of interest exposed. APA asked Council to improve this work because the current solution with the shotcrete looks unappealing (especially the colour). The Rix group has been engaged to improve the aesthetics using a sculpted layer.



**E-Bikes.** This is a hot topic, with young people on e-bikes sharing footpaths with pedestrians. The risk has increased with larger and faster (in some cases illegally faster) e-bikes. All levels of government need to collaborate on policy to regulate and educate the community as government regulation and education has not kept pace with the changes we are seeing in the community.

**Ocean Pools.** Council cleans and maintain 13 or 14 pools. Cleaning is once per week in summer Sept to May and once a fortnight in winter June to August. Avalon Pool, left, has a short shut down period for cleaning overnight. There is a repair/maintenance schedule with Mona Vale and Whale Beach next, followed by Palm Beach

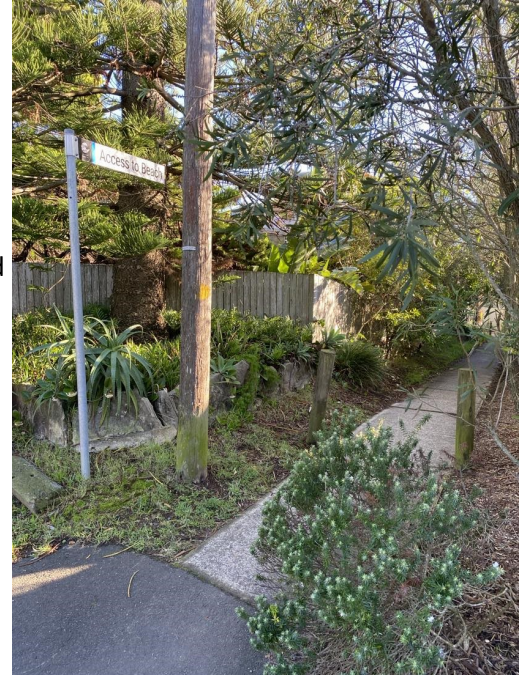


**Central Road Parking restrictions.** Installation of parking restrictions has started following a long consultation process. No parking on most of Central Road's south side.



**APA noted the Norfolk Island Pine** on Old Barrenjoey Rd next to Woolworths Carpark has its top damaged. Council will investigate, left.

**Surfside Avenue pathway & stormwater upgrade**, right. This is due to commence on 22 April and works will be conducted Mon-Friday over two weeks. They will keep it open except for two occasions when they need to close it in the afternoon to allow concrete to set overnight. APA suggested that Public Pathway signage is installed as part of this project.



## APA REPRESENTATIONS ON BEHALF OF OUR COMMUNITY

- ◆ Submission to NSW Department of Planning on **proposed planning reforms** which will rezone Avalon to allow higher density development. 23 February 2024
- ◆ Wrote to Council CEO requesting **safe public access through Shore Brace Reserve** to waterfront. 15 March 2024
- ◆ Emailed Northern Beaches councillors regarding **traffic management upgrades** around Avalon Public school. 4 April 2024

## Thank you very much to APA members who have renewed their membership

Did you know that you can renew for three years for \$50, instead of \$20 per annum? This is convenient for you, our members, and for APA membership records.

If you have overlooked your membership, please go our web page where you can find a [Membership Renewal](#) form to fill in.

If you usually receive APA Bulletins in your letterbox, we will attach a paper copy for you to fill in and post to: P O BOX 1

Avalon Beach 2107

## The aims of APA are to

- ◆ Preserve the natural beauty of the area through promoting proper planning of all future development
- ◆ Express positively and in appropriate quarters the point of view of residents with regards to any proposed development and to protect the residential amenity of the area
- ◆ Work with and assist local government in any efforts to improve and beautify the locality and where appropriate instigate such improvements

APA depends on your support. Donations of time, money and expertise always welcome

PO Box 1 Avalon Beach 2107 <http://avalonpreservationassociation.org.au/> and on Facebook