



Avalon Preservation Trust

Incorporated as Avalon Preservation Association

Bulletin 109 October 11 2022

ALL MEMBERS and FRIENDS are INVITED to our 2022 AGM

Time: 7 pm October 31

Place: The Annexe, Dunbar Park, Avalon Beach



Guest Speaker:

Independent MP for Mackellar DR. SOPHIE SCAMPS

Her topic: “ From little things big things grow”

Dr. Scamps will speak about her journey from co-founding the Our Blue Dot environmental movement to co-founding Voices of Mackellar, a nonpartisan community group established to engage residents in the democratic process, to standing for the Federal seat of Mackellar as an independent, as well as her work to date in parliament.

The AGM will be followed by a light supper and the opportunity to talk with Committee members.

This a chance to renew your membership—or join APA. Membership is \$20pa or \$50 for three years. **We can only accept cash**

The aims of APA are to

- ◆ Preserve the natural beauty of the area through promoting proper planning of all future development
- ◆ Express positively and in appropriate quarters the point of view of residents with regards to any proposed development and to protect the residential amenity of the area
- ◆ Work with and assist local government in any efforts to improve and beautify the locality and where appropriate instigate such improvements

APA depends on your support.

Donations of time, money and expertise always welcome.

We look forward to meeting members at the AGM.

DURING THE PAST YEAR APA has

- ◆ continued to liaise with Council regarding the design of the new 3 way intersection and the trial one way Shared Space near the Rec Centre;
- ◆ supported residents by preparing objections, where neighbours propose inappropriate or over-development;
- ◆ met with Council to ensure that the Council owned carpark outside Woolworths is maintained by Council. APA is continuing to pursue with Council water ponding issues, Woolworths trolley storage in car spaces and Woolworths rubbish storage in the lane.
- ◆ met with Council regarding the inappropriate location of the proposed Mountain bike pump track;
- ◆ continued discussions regarding the Coast Walk;
- ◆ liaised with and supported other Pittwater resident groups via the Pittwater Community Alliance (PCA)

NEW LEP AND DCP

Following the amalgamation of three Council areas to form Northern Beaches Council, NBC is required by NSW Government to prepare one new Local Environment Plan (LEP) and one new Development Control (DCP) which will apply to the entire NBC area. These will provide key standards for future development.

As the first stage of the new LEP, a **Conservation Zones Review** is underway and Council is calling for feedback from residents. Go to <https://yoursay.northernbeaches.nsw.gov.au/planning-ezones>

Conservation Zones are used in LEPs for land with ecological, scientific, cultural or aesthetic values or where land is constrained by hazards, for example bushfire. Typically, permitted uses in these zones may be more restrictive than in other zones, due to hazard constraints or values of the land.

Council commissioned consultants Meridian Urban to assist with the Conservation Zones Review. Council advises that 'the review is complex and based on comprehensive studies'. The studies include:

- ◆ Draft Biodiversity Planning Review, (including ecological and wildlife corridors);
- ◆ Draft Watercourses, Wetland and Riparian lands study;
- ◆ Draft Estuarine Planning Levels Studies, (which investigates coastal inundation hazards, flooding) and
- ◆ Geotechnical Planning Review, (Geotechnical Controls by Douglas and Partners).

At the end of August, Council wrote to residents affected by this Conservation Zones Review.

APA recommends that all members check their property on Council's website by entering the address and the address of neighbours to ascertain how the review affects your property and your surrounds.

Submissions close on October 30 but this may be extended. Cr Rory Amon will move a motion on October 18 that the date be changed to December 2.

APA has serious concerns about this review, the process and the criteria used to determine which land should have its zoning changed from C4 to Residential. More intensive development that would be permitted on Residential zoned land could change the character and landscape of Avalon.

We will send out emails with more details in coming days to help members make submissions.

For general enquiries regarding the Conservation Zones Review contact Council:

Strategic Place and Planning Team

1300 434 434

council@northernbeaches.nsw.gov.au

<https://yoursay.northernbeaches.nsw.gov.au/planning-ezones>

STREETS AS SHARED SPACES TRIAL

This trial is part of the Avalon Place Plan and is expected to begin shortly.

The trial includes:

- ◆ reconfiguring the four-way intersection in the centre of Avalon Village as this intersection currently doesn't comply with Australian Standards and
- ◆ changing the two way section of road outside the Library and Rec Centre to a 10kph southward one way "Shared Space", giving pedestrians priority.

It is anticipated that the trial will run for 12 months.

AVALON GOLF COURSE

The pond in the SW corner of the golf course provides habitat for water birds, small birds and small animals. Due to recent rain events there has been an accumulation of silt and rubbish, increasing pressure on this ecosystem.

Following requests from APA to rehabilitate this area, Council have advised that when the ground is drier, weeds and silt can be removed from the southern end of this catchment. The second part of remediation work would begin in autumn/winter 2023 when

the lower two thirds of the pond would be renovated.



Council are mindful that work needs to be done with minimal impact to wildlife. The day APA took the above image, a family of Dusky Moorhens with tiny chicks were in the pond and nearby were several Australian White Ibis and Magpie Larks enjoying this important wetland area.

Left: a Dusky Moorhen—Rod Warnock (not in Avalon - ours was very shy!)

MOUNTAIN BIKE PUMP TRACK

APA has met with Council on-site to discuss the proposed pump track location opposite Avalon Public School. APA have recommended a preferred location next to the half court basketball near yellow brick road. This is close to the surf club toilets and has the potential to be lit. There has been no further progress as this project is currently unfunded.



ANGOPHORA RESERVE

Click here: <https://www.pittwateronlinenews.com/profile-of-the-week.php> to read Geoff Searl's article about this marvellous bushland. Above: erecting the original gateway to the reserve on Palmgrove Road.

OLD WHARF RESERVE BUSH RESTORATION Sunday October 16

Geoff Searl reports:

The Angophora Reserve mob, who would normally work the 3rd Sunday of the month, moved their work day forward one day to give support and help restore some of the trauma caused by council workers to the Old Wharf Reserve earlier this year.

Right: Some of the members of the Old Wharf Reserve group stand by while Jan and Georgia select species for planting.

In total we had around 16 workers including bush regeneration contractor Jan Koltai



and Georgia Williams from Council who brought with them several hundred tube stock of appropriate species for the reserve.

Below: Hard at it and much activity occurring with Warwick and his son Tiego helping us out with Duke of Ed. work experience.

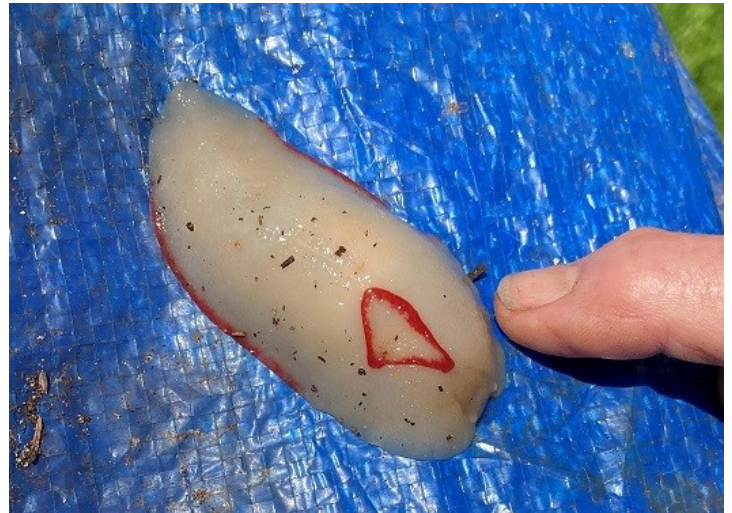


A very worthwhile morning was rounded off with a fine morning tea enjoyed by the happy band on the balcony of the Avalon Sailing Club



TOONGARI RESERVE BUSHCARE October 15

Clockwise: 1. Morning tea—Alex, Pam, Robyn and supervisor Paul. 2. This native Red Triangle slug was sheltering under a tarp someone had left in the reserve. It only feeds on algae on tree trunks, pavers etc. 3. The new raised crushed sandstone path means you can walk (mud-free) through the reserve from Avalon Pde to Avalon shops via Bowling Green Lane.



LOOKING AFTER AVALON—GIVE BUSH CARE A GO!

All bushcare groups meet in the morning, mostly between 8:30 and 11:30 on the following days

Avalon Dunes:	first Sunday of each month
Bangalley Head Reserve:	second Sunday
Plateau Park:	second Friday
Angophora Reserve:	third Sunday
Toongari Reserve:	third Saturday
Old Wharf Reserve:	third Saturday
Catalpa Reserve:	fourth Sunday
Careel Creek:	fourth Saturday

There is no need to stay for the whole session. Any time you can spare is wonderful.

For details of meeting place and times please contact Michael Kneipp, Northern Beaches Council bushcare officer 0417688492

More bushcare information: <https://www.northernbeaches.nsw.gov.au/environment/bushcare/bushcare-sites>