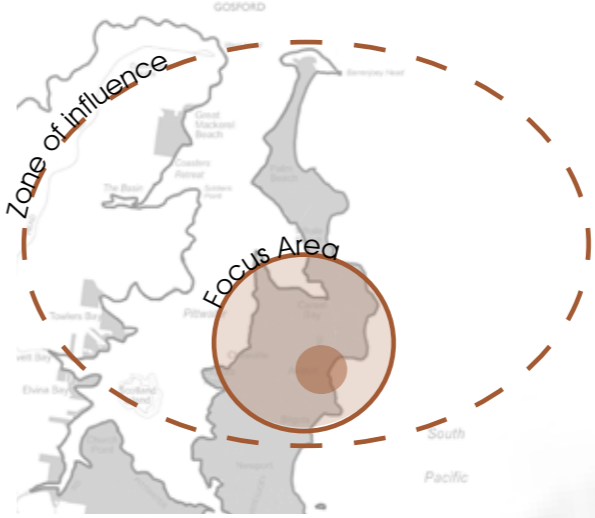


Avalon Beach

a village haven



Aims & Objectives

This guiding document summarises the thoughts and ideas of The Avalon Beach 'Core Working Group' into an informing document that reflects the 'essence' of Avalon Beach, guiding future planning and development of the local area.

Both private and public organisations are encouraged to engage with this place vision document - to identify, protect and build upon the unique qualities of the area.

Avalon Beach 'Core Working Group'

The group was formed in 2013 as the result of community leaders' concern for the future of Avalon Beach and surrounding areas.

The group is made up of representatives from the following stakeholder organisations:

Avalon Preservation Assoc., Avalon Palm Beach Business Chamber of Commerce, Palm Beach & Whale Beach Assoc., Avalon Beach Historical Society, Pittwater Natural Heritage Assoc., Pittwater Community Arts, Eramboo, Young Gourmet, Sym Studio, Avalon SLSC, CABPRA, Tourism Advisory, Avalon Bowling Club, Subbranch Avalon RSL, Pittwater Councillors - North Ward.

Methodology & Process

Sym Studio Pty. Limited were requested by the Avalon Preservation Trust to facilitate a place making process - to identify a clear vision for Avalon Beach and its surrounding areas.

This document is the culmination of historical and cultural research, urban character analysis, group discussion and local knowledge.

Place Vision Summary Document (part 1)
Place Vision Appendix (part 2)

It is the intention of Pittwater Council to undertake a broad based 'place making' process for Avalon Beach in 2016. This will extend to include the general community.

project

COMMUNITY LEADING, PLACE VISION DOCUMENT

Issue date: 11/01/16

prepared for

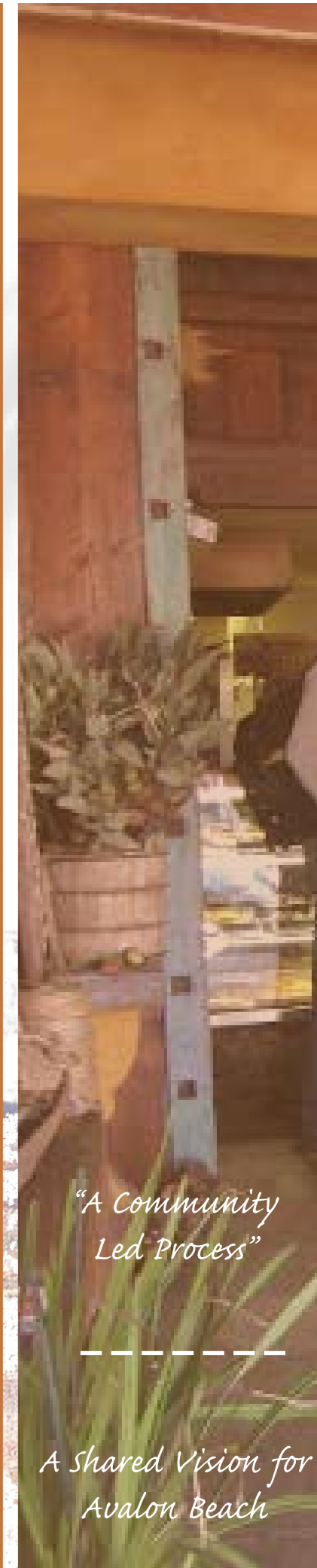
Avalon Beach
Core Working Group
& Avalon Preservation Trust

prepared by



Placemaking . Urban Landscape Design .
Landscape Architecture .
Suite 4F/6 Jubilee Avenue
Warriewood-Mona Vale
www.symstudio.com

Copyright text © sym studio pty ltd. 2015
Copyright images © sym studio pty ltd. 2015 (unless otherwise credited)



"A Community Led Process"

A Shared Vision for Avalon Beach

Image Reference: A. Murch, 1963. Operation Centipede, Avalon Surfboat 1963

Avalon Beach Vision Statement

Encapsulates the essence of a place:

*A casual peninsula village where a multi-faceted community expresses creativity; curates bio-design and values quality of life;
A haven where a sublime interplay of landform, water & tree canopy connects people with place;
An active and healthy community that values heritage and nurtures the arts and architecture.
Local trade favours products and services derived from nature; contextual architecture and unrefined materials that enhance over time.*

