

**Avalon
Preservation Trust
incorporated as
Avalon
Preservation
Association**



Bulletin no 93

March 2017

1. Amalgamation

A letter to the Manly Daily dated March/April 1986

LETTERS

Let's get 'local' back into local government

C. Kilduff (Letters, March 29), of Warriewood, rejects the formation of a Pittwater shire without advancing any reasons to support his argument.

The call for a new shire is to bring the word "local" back to local government so that people are truly represented by someone they know, rather than being controlled by some Big Brother located in a big bureaucracy 20 kilometres away.

A study of management principles and practices clearly reveals that economies of scale work very well for machines, but work in reverse with human organisations. The larger they are, the more remote and less efficient they become.

We only have to look at what happened after Mackellar County Council was absorbed into the bigger monolith to be warned.

I recommend that Mr Kilduff read *In Search of Excellence*, by Thomas J. Peters, which points out that an organisation of 1000 employees is too big and should be split.

Warringah Shire Council has 1200 employees and I can, from my own experience of running businesses employing 200, 400, 500 people, testify that this council is too big.

To solve Warringah's problems by amalgamation with Manly, thus building a bigger bureaucracy, flies in the face of logic, so why promote it?

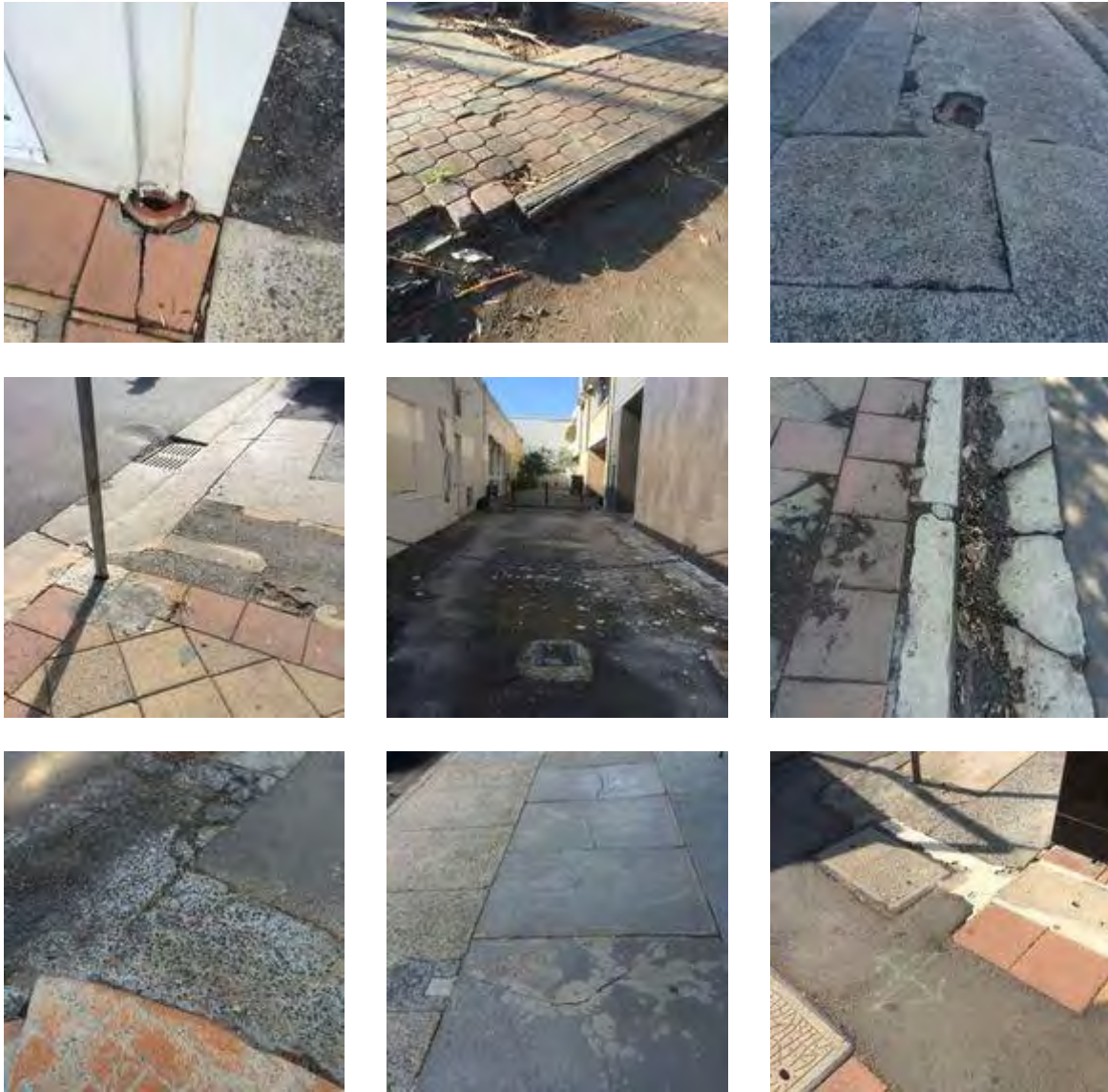
The reason is clear. The Labor Party wants bigger councils, more remote from people, because it is easier to control a smaller number of units and voting for councillors becomes non-personal and more political, which Labor see as giving it a better chance of winning.

Mr Kilduff, a member of the ALP is sprouting its policy and backing it with emotional statements rather than logic.

Max Smith, MP for Pittwater.

2. General neglect of Avalon Beach commercial centre

The APA has becoming increasingly concerned about the poor state of the footpaths, lanes and roads in the Avalon Beach commercial centre. We have compiled a selection of photos and will be sending them to Northern Beaches Council (NBC) requesting immediate attention. Many people have reported either tripping or seeing someone trip on the many uneven surfaces around the commercial centre. It provides a significant risk for residents and visitors alike.



3. Casuarinas on Old Barrenjoey Road near the 192 bus stop



APA was approached by the NBC Landscape Architect, about the removal of the casuarinas because there have been some claims of the trip hazards from the pavers. (This is rather ironic in light of Item 2.) A member of the APA committee reviewed the trees and strongly

rejected the proposal to remove the casuarinas. We would consider that they are arguably a cultural asset and provide valuable amenity. The suggestion of a trip hazard is easily rectified. Currently this area looks very dated and slightly neglected, with three different paving materials and poor drainage. It is accordingly under-utilised. This would be ideal as an area (in proximity to the bakery) where people could sit in the shade of the casuarinas. We suggested either increasing the size of the garden bed slightly with a new sand setting bed and relay pavers or increasing the level to accommodate additional root growth or shaving off regrowth from the roots. We strongly oppose the removal of the casuarinas. We need to protect our trees.

4. Development Applications

- **45 Riverview Road**

The original D.A. was refused by Council and has now been resubmitted. The APA has again made a submission because of ongoing concerns about this D.A. The new D.A. cannot be considered as a variation to the one already rejected. It is a repeat of a D.A. that has already been rejected and accordingly, this D.A. must also be rejected by NBC.

- **41 Marine Parade**

The APA made a submission on the original D.A. and then on the revised application. Our submission raised a number of issues including concern with the bulk and scale of the proposed dwelling. The proposed development is located in a prominent position and is three storeys in height when viewed from the south and west. Any development should be sympathetic to the character of this area. We were also concerned that the dining room area of the proposed building appears to breach the required building envelope, and is therefore non-compliant with Clause D1.11 (Building envelope) of the Pittwater 21 DCP.

- **1186 Barrenjoey Road Palm Beach**



In January 2017, alarm bells rang when it became known that a developer wished to demolish the original teahouse on the corner of Beach Road and Barrenjoey Road. The iconic building was built by a local family, the Gonsalves, almost a century ago. The proposal was for two dwellings and a pool. Fortunately, after considerable local outcry, the D.A. was withdrawn (for now).

- **47 Central Road Early Childhood Centre**



This proposal raised concerns in the immediate vicinity of 47 Central Road but also among the many who attempt to walk, ride or drive along this relatively narrow road. APA considered that it is not an appropriate usage or development for this site and urged refusal of consent. Our reasons included

- The building and its use as a childcare centre for 72 children would impact unduly on adjoining properties.
- Its bulk and scale are out of character with the surrounding residential land use.
- Traffic in the narrow street is already considerable and when cars are parked on both sides of the road, it becomes a one-lane road.
- Buses are sometimes obstructed and bus-drivers have had to knock on doors to ask for cars to be moved.
- Several valuable native trees, remnants from the original vegetation, will be removed. Others will be preserved, however, the initial preservation of trees will inevitably be overturned because of the safety risks for children.

Council refused the D.A. However, the developer has taken the case to the Land and Environment Court and at the time of printing, its decision was unknown.

5. Mapping Cultural Assets in Avalon Beach

Across 2016, the APA's Cultural Mapping Team led an innovative grass roots -based project that will inform Avalon Beach's future planning. Utilising community feedback, the expert team built and analysed an online inventory with over 600 entries listing the scale of Avalon's cultural assets. The voices of all residents were encouraged including the input of Barrenjoey High School's creative arts students.

The data shows that Avalon Beach has a rich base of arts and cultural resources, but it also has some significant gaps. It lacks affordable studio space and it has limited distinctive public art. Its cultural heritage assets seem to be under the radar and limited in number. Feedback identified the need for a 'creative arts centre' or a place for active arts specific participation across age groups and across artforms and the development of a regular calendar of arts/cultural specific events and festivals. This would enable Avalon to celebrate its creative heritage through art, performance, literature, film and history at events such as an Avalon Beach Writing Festival, Avalon Beach Little Laneways Stroll, Avalon Beach Makers Market. This has been a remarkable Project with numerous benefits. Collaborative partnerships have been forged, especially with Barrenjoey High School, Eramboo Artist Environment, the Palm Beach and Whale Beach Association and SymStudio. Generous local residents, organisations

and businesses gave to the Youth Mapping Project, ensuring that Barrenjoey students could work with artist mentor, Sally Mayman, professional photographer who exceeded all expectations and delivered an amazing student art exhibition on Avalon Market Day. Avalon has all the ingredients to develop into a cohesive and interesting cultural hub - a place for locals and for visitors to experience a creative community first hand. The Mapping Team briefed the Administrator, Northern Beaches Council at end of March and is hoping to further the Project in 2017 and beyond in consultation with the community and Council. For further information contact Sue Boaden – Avalon Beach Cultural Mapping Project Team Coordinator M 0418 422 528 E sboaden@bigpond.com

6. Signage 35 Avalon Parade Avalon Beach.



The APA was concerned to see the bright yellow signage dominating the roof of 35 Avalon Parade. This prominent corner building, currently operating as a bottle shop, is listed as a heritage item under Pittwater Council's LEP. NBC does have guidelines for signage and so APA contacted NBC to express concerns about the excessive size. The signage must comply with the Pittwater 21 DCP (2015).

7. Council Elections - 9 September 2017

Pittwater Forever (PFE), the umbrella association for all the local community groups, has called on community-minded residents in Pittwater from Palm Beach to North Narrabeen to nominate for election to the new mega Northern Beaches Council in the lead up to elections in September.

Chairman Craig Boaden commented, "Pittwater desperately needs good candidates now more than ever, especially since we are facing an avalanche of well-funded candidates from other parts of the northern beaches who are mounting a concerted effort to take over the new Council.

Pittwater Forever has identified eight major criteria for suitable candidates to represent the area formerly known as Pittwater Council. Note that this is a reduction from nine representative Councillors to only three.

1. Whilst candidates may be members of a political party, they are not endorsed by nor do they represent those parties;
2. They do not support or endorse matters in Council on political or party grounds.
3. They support and will vote in Council along the principles of PFE and the Pittwater community and are truly independent.
4. They represent the whole of the Pittwater community that endorsed them for Council.
5. They are ratepayers or residents of Pittwater.
6. They are not beholden to or funded by any developer interests.

7. They understand and support Pittwater's desired character as stated in the Pittwater Planning Document of May 2016.

8. They support the eventual restoration of Pittwater Council on its pre-amalgamation boundaries.

Potential candidates should make contact with their local community association. They can find more information about the nomination process at

http://www.votensw.info/nsw_local_council_elections_2017/candidates_and_groups

8. Bushcare

Angophora Reserve Bushcare Group

The Angophora Reserve Bushcare Group usually meet at 8.30 am on the third Sunday of the month at the Bilwarra Road entrance to the reserve (between nos. 26 and 28). Morning tea usually happens around 11. In April, because the third Sunday is Easter Sunday, the group will meet on Sunday 9 April at the Wandeen Road entrance. Any queries please call Geoff on 0439 292 566.

Avalon Dunes Bushcare Group

The Avalon dunes need you. The dunes look green but some of that is weeds. We meet on the first Sunday of each month, 8.30 - 11.30 near the Montessori School off Tasman Road. Contact Macrae Macrae 0439409202.

Avalon Golf Course Volunteer Bushcare Group

The Avalon Golf Course Volunteer Bushcare Group work on the second Wednesday of the month and meet in the golf course car park at 3.00 pm finishing at about 5pm for a well-deserved afternoon tea. New bushcarers are very welcome and tool belts and tools will be provided along with advice where necessary. Any queries, please call Geoff on 0439.292.566

Bangally Headland Reserve Bushcare Group

The group meet on the second Sunday of each month from 8.30 – 11.30 entering from Whale Beach Road. Contact Marita for more information on 0439 409 202.

Careel Creek Bushcare Group

This group meets on the fourth Saturday of each month from 8.30 to 11.30 am. Meeting places vary, and so to check the location, please ring Karin Nippard NBC bushland manager on 0417040945.

Old Wharf Reserve Bushcare Group.

The group meets in the Reserve next to 30 Hudson Parade, near Avalon Sailing Club on the third Saturday of every month from 8.00 to 11.00 am.

Plateau Park Bushcare Group

The Plateau Park Bushcare Group meets on the first Friday morning of each month from 8.30 – 11.30 am in the playground on Plateau Road Bilgola Plateau. For further information contact: Ken Hughes 9918 9170

Toongari Reserve Bushcare Group

The Toongari Reserve Bushcare group meets from 8.30-11.30 on the third Saturday of each month. This reserve lies between Avalon Parade and Central Road. Contact: Robyn Hughes 99183931

For information on all the local bushcare groups contact Helena Dewis at Northern Beaches Council on 0408 164 235 or helena_dewis@pittwater.nsw.gov.au There is also information on the website http://www.pittwater.nsw.gov.au/environment/bushcare/bushcare_groups_-_when_and_where

9. APA membership renewal

The \$10 membership fee is due on 30 June each year. Many of you have paid for a number of years in advance. Details of your subscription, including expiry date, are emailed

to you with your bulletin. Please note if you still require your bulletin to be mailed to you, you will sadly received the cut down version without photos because of the cost of printing. The expiry date of your subscription is printed on your envelope. Your APA membership number makes it easier for people to pay by direct deposit. The APA number also provides the APA treasurer with sufficient identification as to who has paid by direct deposit. **Renewals can be paid online to Westpac: Avalon Preservation Association Incorporated BSB 732-095 Account 07-0127. Please include your name and/or APA membership number to ensure I know who you are!** You can still renew your membership by mail (or in person) to Sue Martin, 164 Riverview Road, Avalon Beach 2107. To save additional postage, your receipt will be mailed to you with the subsequent bulletin or via email. Please encourage your local family members and friends to join APA. Please consider donating to our Fighting Fund to support campaigns. Simply select the amount you wish to donate and add to your annual member fee when renewing, or donate at any time. Please specify whether the money is for membership renewal or for the FF (Fighting Fund).

The Avalon Preservation Association thanks Avalon Beach Community Library for their support.

✂.....

APA membership

The cost is \$10.00 per family renewable on 30 June annually at **Westpac Avalon Preservation Association Incorporated BSB 732-095 Account 07-0127 or to 164 Riverview Road Avalon Beach.**

I/We:.....Phone:.....Address:.....
.....

hereby apply for membership in the Avalon Preservation Association. I/We agree to abide by the provisions of the APA Constitution if accepted.

Email:.....

We are happy for our bulletin to be emailed rather than mailed. Yes No

Signed:Date:

I wish to donate \$ to the APA Fighting Fund. I understand that the purpose of the Fighting Fund is to allow members and others to support specific campaigns of concern to Avalon residents.